

AMPLIRUN® ZIKA VIRUS (ASIAN LINEAGE) RNA CONTROL

For *in vitro* diagnostic use

MBC103: Purified RNA of Zika virus (Asian lineage) to be used to control *in vitro* diagnosis techniques based in nucleic acids amplification.

INTRODUCTION:

Zika virus (ZIKV) is an enveloped and icosahedral single-stranded RNA virus belonging to the genus *Flavivirus*, member of the *Flaviviridae* family and therefore evolutionarily related to other mosquito-borne arboviruses such as dengue, yellow-fever (YFV) and West Nile virus. Clinical picture is characterized as a 'dengue-like' syndrome, with abrupt onset of fever and an early onset evanescent rash, often pruritic. The possible link between Zika virus infection and microcephaly in newborns has caused concern.

CHARACTERISTICS:

The lyophilized nucleic acid is included in a thermo-sealed foil pouch containing a silica gel bag. It is necessary to reconstitute it before use (refer to "Preparation of reagents").

Preparation: Grown in Vero infected cells

Extract preparation: Commercial genomic RNA extraction method.

KIT CONTENTS:

1 VIRCELL ZIKVAL RNA CONTROL: 1 vial with lyophilized RNA of Zika virus, (PRVABC59 strain), (12500-20000 copies/μl once reconstituted (see Table 1)). RNA quantification has been performed with real-time PCR instrument from ROCHE (Light Cycler®480 II).

2 VIRCELL CONTROL RECONSTITUTION SOLUTION: 500 μl of molecular biology grade water, DNase, RNase free.

| | |
|---------------|-----------|
| Lot number | |
| Concentration | copies/μl |

Table 1.

Materials required but not supplied:

Additional diagnosis kit.

STORAGE REQUIREMENTS:

Special transport conditions not required. Store the lyophilized vial at 2-8°C inside the foil pouch. Once the pouch is opened, reconstitute the lyophilized vial immediately and store between -70°C and -90°C after reconstitution (temperature indicated on the label).

STABILITY AND HANDLING OF REAGENTS:

Handle reagents in aseptic conditions to avoid microbial contaminations.

Use only the amount of reagent required for the test.

After control resuspension RNA solution should be aliquoted in order to avoid multiple freeze-thaw cycles. The product is

stable until the expiry date indicated in the label, if the instructions for use are followed.

VIRCELL, S.L. does not accept responsibility for the mishandling of the reagents included in the kit.

RECOMMENDATIONS AND PRECAUTIONS:

1. This product is for *in vitro* diagnosis use only and for professional qualified staff.
2. Sterile tips with aerosol barrier are essential to prevent contamination.
3. Specimens should be handled as in the case of infectious samples using safety laboratory procedures. Thoroughly clean and disinfect all work surfaces with a freshly prepared solution of 0.5% sodium hypochlorite in deionized or distilled water.
4. In order to perform the test it is essential to have separate working areas.
5. Dispose of unused reagents and waste in accordance with all applicable regulations.
6. The component VIRCELL RNA CONTROL could include genetic material or substances of animal and/or human origin. VIRCELL RNA CONTROL could contain inactivated Zika virus antigen. VIRCELL RNA CONTROL contains purified nucleic acids obtained from inactivated microorganism, nevertheless, it should be considered potentially infectious and handled with care. No present method can offer complete assurance that these or other infectious agents are absent. All materials should be handled and disposed as of potentially infectious. Observe the local regulations for clinical waste disposal.
7. Dilutions below 1000 copies/μl should be made immediately before use. Freezing of product dilutions containing less than 1000 copies/μl is not recommended as partial RNA degradation might occur.

PREPARATION OF THE REAGENTS:

1. Tear the foil pouch containing VIRCELL RNA CONTROL 1.
2. Centrifuge VIRCELL RNA CONTROL 1 1 minute at 1000 g.
3. Add 50 μl of VIRCELL CONTROL RECONSTITUTION SOLUTION 2 and mix until completely reconstituted. The concentration will be 12500-20000 copies/μl once reconstituted (see Table 1).
4. Shake with vortex for 30 seconds to dissolve and homogenize completely.
5. It is recommended to prepare VIRCELL RNA CONTROL aliquots. In case dilutions were to be prepared use VIRCELL CONTROL RECONSTITUTION SOLUTION 2 for this purpose.

TEST PROCEDURE:

Once nucleic acid is reconstituted, use it according to indications of additional diagnosis kit. Use resuspended VIRCELL CONTROL as an extracted clinical sample adding it directly to amplification reagents.

INTERNAL QUALITY CONTROL:

Each batch is subjected to internal quality control testing before releasing. Quality control analysis is performed by real-time PCR run in a LightCycler 480 (Roche). Final quality control results for each particular lot are available.

INTERPRETATION OF RESULTS AND VALIDATION PROTOCOL FOR USERS:

Refer to indications of additional diagnosis kit.

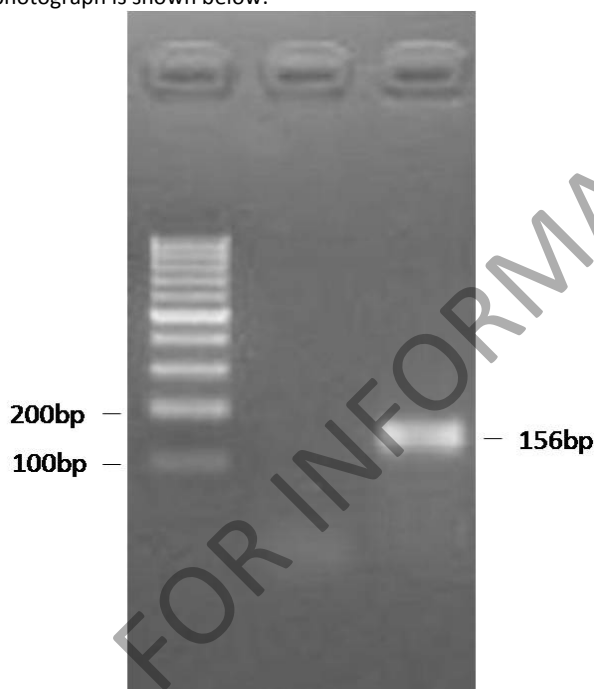


LIMITATIONS OF METHOD:

1. This reagent is intended to be used with methods of human diagnosis. This test has not been verified with other methods.
2. The user of this kit is advised to read carefully and understand the package insert. Strict adherence to the protocol is necessary to obtain reliable test results.
3. Use of this product should be limited only to personnel trained in molecular techniques.
4. The identity test was carried out with some specific primers according to publicly available sequences of the microorganism. Changes in the sequences of the primers of the reaction may produce a range of different sizes or may not display product amplification.
5. This control does not substitute internal diagnostic kit controls.
6. The quantification was carried out by own brand qPCR against a standard used as a calibrator. Results may vary with the amplification conditions of the end user.

PERFORMANCES:**• IDENTITY TEST**

RT-PCR analysis of RNA control: RT-PCR analysis was performed with a specific oligo pair on purified Zika virus RNA. The reaction produced a 156 bp fragment. It was visualized on a 2% agarose gel using ethidium bromide staining. The gel photograph is shown below:



| Line | Sample |
|------|--------------------------------|
| 1 | Molecular size marker (100 bp) |
| 2 | Negative control |
| 3 | 156 bp amplified fragment |

• QUANTIFICATION TEST

Quantification is based on Real-Time qPCR using the standard curve method. This method involves the use of multiple replicates of different serial dilutions of both the product and the standard of quantification.

• INTRA-ASSAY PRECISION

3 replicates of 3 serial dilutions of 3 vials of the product are amplified by the same operator under identical Real-Time PCR conditions. Less than 10% coefficient of variance was observed between all assays.

• INTER-ASSAY PRECISION

3 replicates of 3 serial dilutions of 1 vial of the product are individually amplified by Real-Time PCR by 2 different operators on 3 consecutive days. Less than 10 % coefficient of variance was observed between all assays.

SYMBOLS USED IN LABELS:

| | |
|---------------------------------------|---|
| IVD | <i>In vitro</i> diagnostic medical device |
| | Use by (expiration date) |
| | Store at x- y° C |
| LOT | Batch code |
| REF | Catalogue number |
| | Consult instructions for use |
| RCNS Xμl | Reconstitute in x μ l |
| SHIP | Shipment temperature |
| STORE | Storage temperature |
| NO-OP | Do not open until use |

BIBLIOGRAPHY:

1. Oumar Faye, Ousmane Faye, Diawo Diallo, Mawlouth Diallo, Manfred Weidmann and Amadou Alpha Sall. (2013). Quantitative real-time PCR detection of Zika virus and evaluation with field-caught Mosquitoes. *Virology Journal*, 10:311
2. Bustin SA. (2000). Absolute quantification of mRNA using real-time reverse transcription polymerase chain reaction assays. *J Mol Endocrinol*. 25(2):169-193.
3. Bustin SA. (2002). Quantification of mRNA using real-time reverse transcription PCR (RT-PCR): trends and problems. *J Mol Endocrinol*. 29(1):23-39.
4. Freeman WM, Walker SJ, Vrana KE. (1999). Quantitative RT-PCR: pitfalls and potential. *Biotechniques*. 1999 26(1):112-122, 124-125.
5. Larionov A, Krause A, Miller W. (2005). A standard curve based method for relative real time PCR data processing. *BMC Bioinformatics*. 6:62.

For further inquiries please contact:

customerservice@vircell.com

REVISED: 2016/10

